

Franklyn James



40 Narrow Street

, London, E14 8DG

Asking Price £750,000

This duplex apartment sits directly on the River Thames and offers incredible views, as if you are literally standing on the water.

Located on Narrow Street, which is popular with runners and walkers enjoying the Thames Path, you also have access to the CS3 cycle path and are just over half a mile's walk from Canary Wharf, which offers an abundance of shops, restaurants, and bars.

The secure development is beautifully maintained and benefits from gated off-street parking. Internally, the property has undergone numerous improvements, including upgrades to both bathrooms. The most notable enhancement is to the kitchen, which has been opened up to ensure the water view can be appreciated whether you're cooking, relaxing in the living area, or sitting out on the balcony.

Further benefits include fitted wardrobes, an en-suite bathroom, and a generous amount of storage space.

- Incredible views of the Thames
- Secure gated parking
- Private balcony
- Two bathrooms
- Two bedrooms
- Modern fitted kitchen

Viewing

Please contact our Limehouse Sales Office on 02077911777 if you wish to arrange a viewing appointment for this property or require further information.



2



2



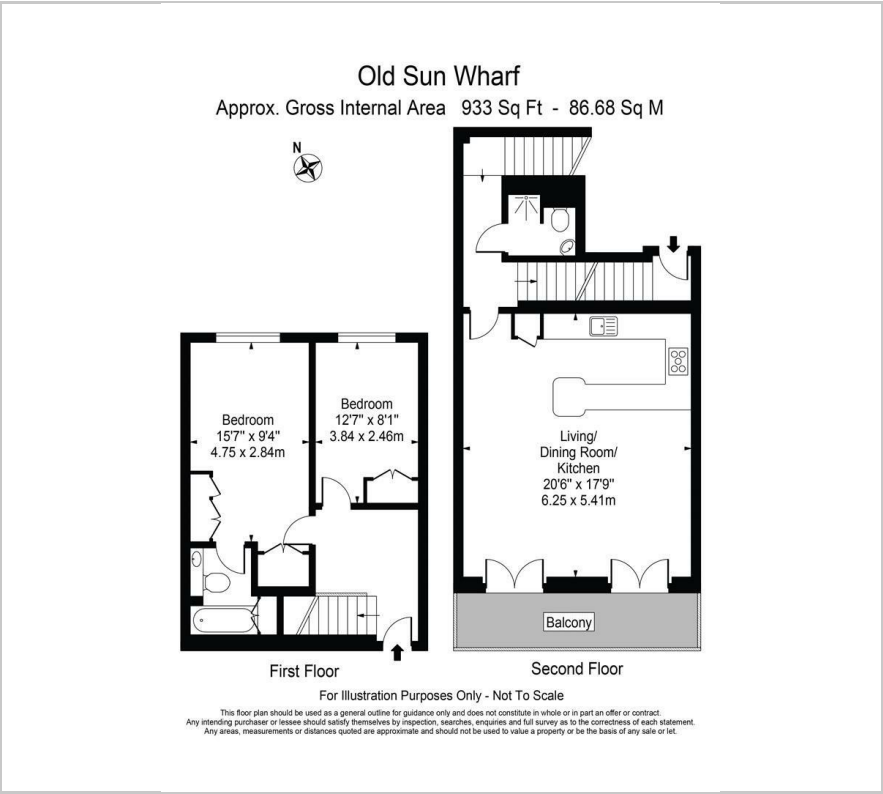
null



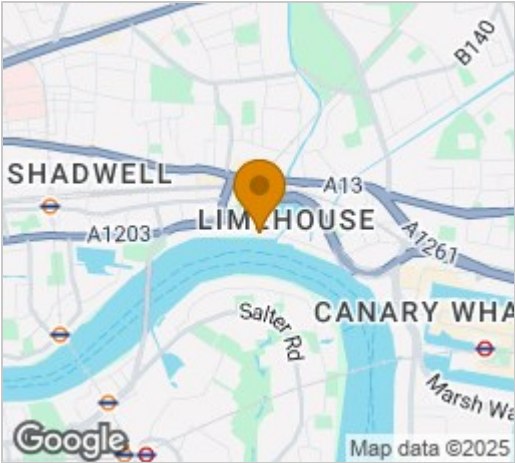
C

Franklyn James

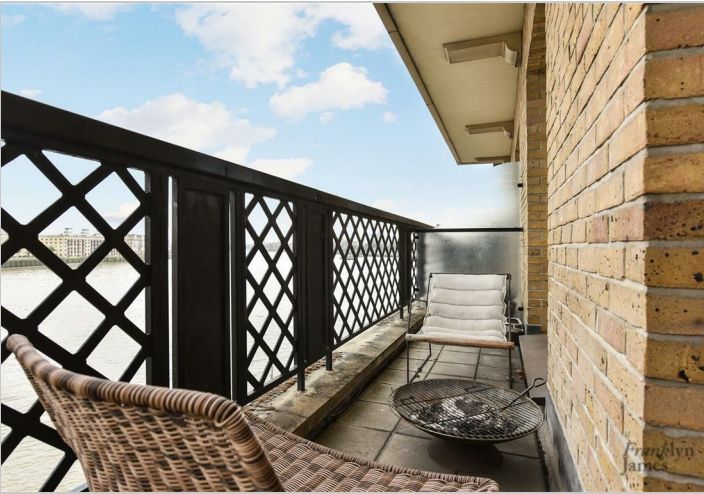
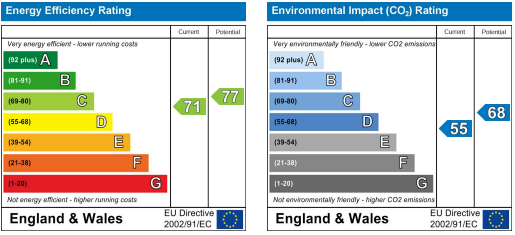
Floor Plan



Area Map



Energy Efficiency Graph



These particulars, whilst believed to be accurate are set out as a general outline only for guidance and do not constitute any part of an offer or contract. Intending purchasers should not rely on them as statements of representation of fact, but must satisfy themselves by inspection or otherwise as to their accuracy. No person in this firms employment has the authority to make or give any representation or warranty in respect of the property.